



Rancho Sarco Vineyards

Napa, California

NORD VINEYARDS

Bay fog and morning shadows from nearby Mt. Geroge create cooler growing conditions, allowing longer hang time which promote a more floral aromatic much sought-after by artisan winemakers. The vineyards are an island oasis surrounded by country estates in Napa Valley's Coombsville region.

SITE CHARACTERISTICS

- ❏ Nearby mountains and the Alta Heights hills create a unique climate with cooler nights
- ❏ Soils are Coombs gravelly loams
- ❏ A well provides abundant, high quality irrigation water
- ❏ Vineyards slope gently (1-2%) to the south
- ❏ Picturesque Sarco Creek meanders past the vineyard



SUSTAINABILITY

- ❏ Streambank erosion site restored with natural structures: willow revetments and toe rock
- ❏ Varieties selected for Pierce's Disease resistance
- ❏ Compost is applied to add organic matter and slowly released nutrients
- ❏ Frost protection sprinkler heads use low-flow nozzles for water conservation

PLANTINGS

- ❏ Chardonnay clone 4 planted in 1993 with a 10X6 spacing
- ❏ Syrah clones 7 and 877 planted in 2000
- ❏ Cabernet Sauvignon clone 8 planted in 2000, spaced 8X6
- ❏ Rootstocks include 110R, 3309, and 5C
- ❏ All trellising is VSP
- ❏ Row orientation is northeast-southwest, with good protection of the fruit zone



Nord Vineyards: Sustaining Napa Valley's legacy of world-class wine.

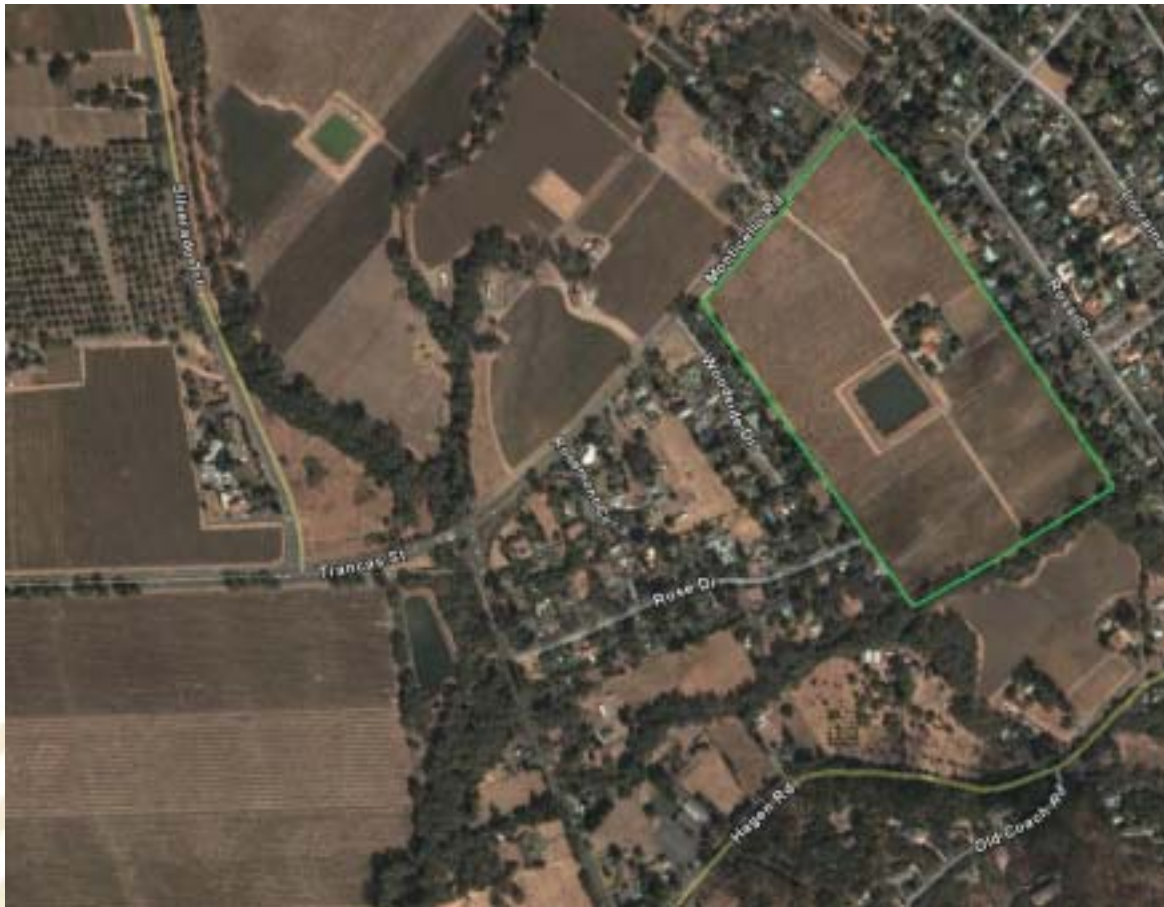
Rancho Sarco Vineyards



NORD VINEYARDS

VINEYARD DATA

BLOCK	VARIETY	CLONE	ROOT-STOCK	SPACING	ACRES	YEAR PLANTED
East CH	CHARDONNAY	4	110R	10 x6	8	1993
West CH	CHARDONNAY	4	5C	10 X 6	14	1992
TG SY	SYRAH	7	110R	10 X 6	6	2002
TG CS	CABERNET SAUVIGNON	4	110R	8 X 6	5	2000/08
CS	CABERNET SAUVIGNON	8	110R	8 X 6	5	2000



DIRECTIONS:

Rancho Sarco Vineyards, 1135 Monticello Road, is located 0.4 miles east of the intersection of Silverado Trail and Monticello Road.